



1

What is a Continuum of Care (CoC)

- **Regional planning body**, established by HUD (Housing and Urban Development), responsible for organizing & coordinating a designated region's response to homelessness; *not an organization*
- Promotes **community-wide response** to ending homelessness using Housing First best practices for collective impact across the region
- **Cross-sector representation** – public, private, non-profit, community members, lived experience
- Colorado has 4 CoCs – *Metro Denver Homeless Initiative*; MDHI (7 County Denver Metro region), *Northern Colorado* (Larimer & Weld), *Pikes Peak* (El Paso County), and *Balance of State* (remaining 54 Counties)

2

History of Northern Colorado Continuum of Care (NoCO CoC)

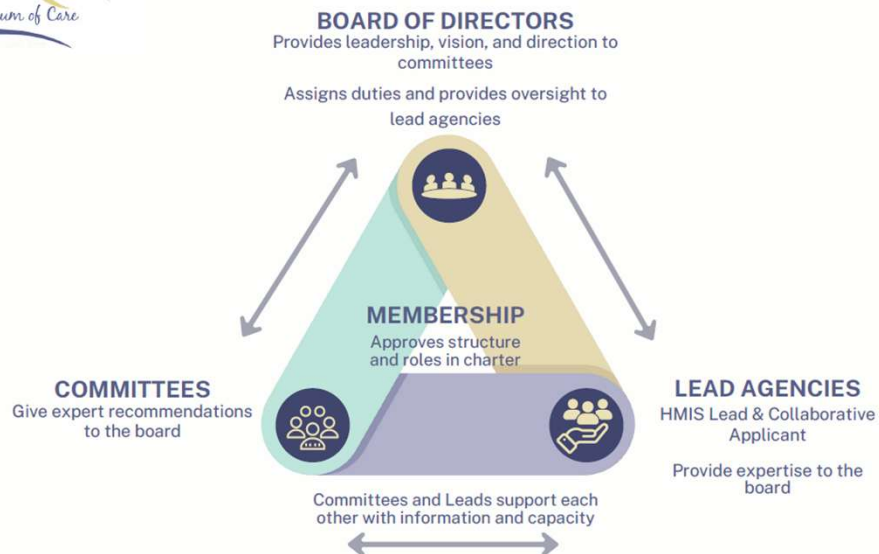
- Previously in Balance of State (BoS) alongside 54 other counties
- Petitioned HUD to split – needing more local control
- Became own CoC in January 2020
- The Governing Board served as the primary driver of work
- Nov. 2021, submitted first competitive CoC Program Application
- Hired Kelli Pryor as CoC Director beginning of 2022; Kelli resigned in early 2024 & the CoC has been without a director
- CoC and Board structure and governance is in state of growth and improvement



3



Governance Structure



4



Conditions for Collective Impact

Common Agenda

Ending Homelessness



Shared Information System

Homelessness Management Information System (HMIS)



Backbone Support Agencies

United Way of Weld County & Homeward Alliance



Mutually Reinforced Activities

Continuum of Care, standing workgroups, CAHPS, Housing First



Continuous Communication

Newsletters, membership meetings, Annual State of Homelessness Report



5

NoCO CoC's Essential Objectives



Aligning strategies across the region

Housing First best practices
Local government coordination
Setting Regional Priorities
Funding coordination – collaboration over competition
Elevating lived experience voices



Ensuring comprehensive, quality data

Homeless Management Information System (HMIS)
Point in Time and Housing Inventory Counts
State of Homelessness Report



Supporting Effective Housing Placements

Coordinated Assessment Housing Placement System (CAHPS)
Case Conferencing
Flex funding
Veteran prioritization

6

Housing First: Support-Centered Housing

- An **evidence-based best practice**, informing how services are offered
- Prioritizes providing permanent housing to people experiencing homelessness
 - Low barrier
 - Recognizes client choice, autonomy
 - Supportive services are offered, but not mandated
 - Responsive and flexible in nature
- Data shows
 - Cost-effective
 - Quicker access to housing
 - Utilization of supportive services
 - High retention rates



7

Coordinated Assessment and Housing Placement System (CAHPS)



IDENTIFY



ASSESS



MATCH



LEASE UP

A Coordinated Assessment and Housing Placement System (CAHPS) is a way for communities to match people experiencing homelessness with the housing and services that best fit their needs, using a shared process and list.

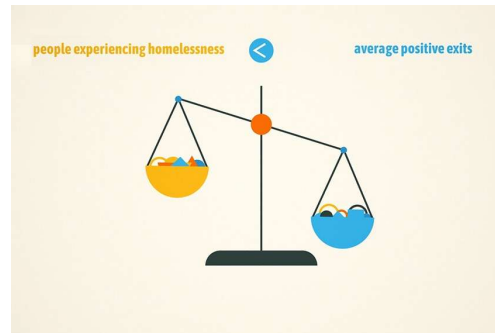
The NoCO CoC coordinates the CAHPS system for Larimer and Weld Counties, helping the region share and direct housing resources to the people who need them most.



8

Built for Zero

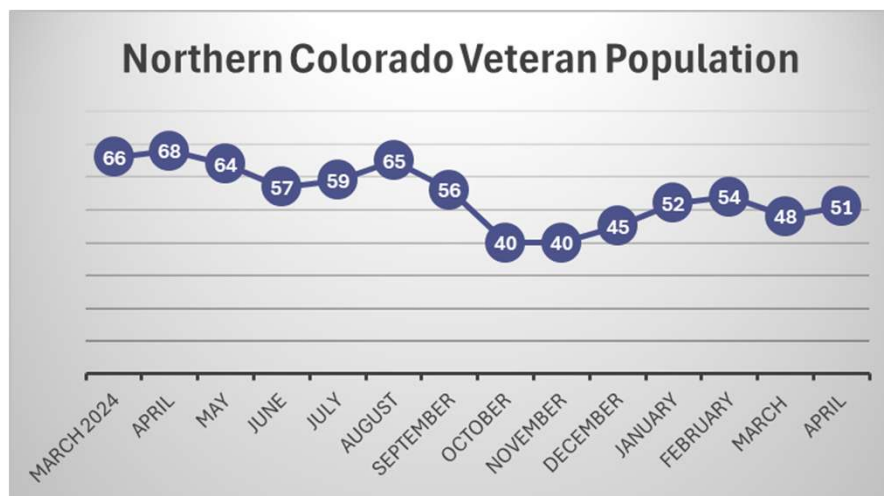
- A National Movement & Methodology
 - Data-driven strategies to create an effective, efficient and equitable homeless response system
- **Functional Zero**: a milestone that indicates that fewer people are experiencing homelessness than are routinely exiting to homelessness
- NoCO CoC's **Veteran** Functional Zero Efforts:
 - Start small
 - Implement system shifts
 - Learn and adapt
 - Scale up



9

Progress Towards Functional Zero

All Active Veterans in Northern Colorado Experiencing Homelessness
March 2024 – April 2025

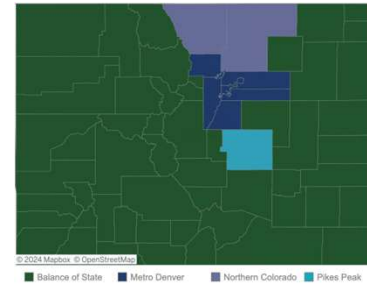


10

What is HMIS?

HOMELESS MANAGEMENT INFORMATION SYSTEM

- Federally mandated data collection
- Captures client level data
- Captures services and housing provided to people at risk of or experiencing homelessness
- Northern Colorado is part of a statewide implementation of HMIS, where all four CoC's are entering into one instance of HMIS



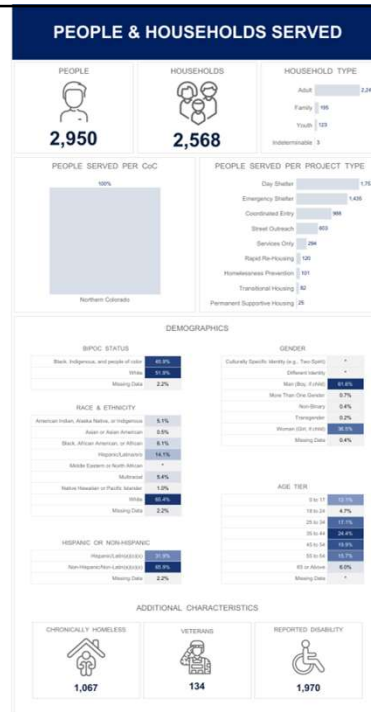
11

Individuals Served in 2024 in the Northern Colorado Continuum of Care



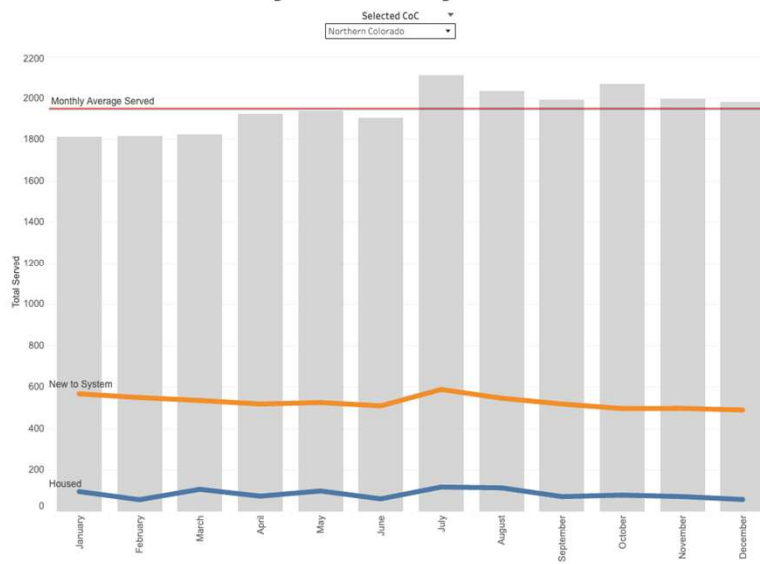
12

Individuals Served in Quarter 1 of 2025 in the Northern Colorado Continuum of Care



13

Monthly COHMIS System Flow

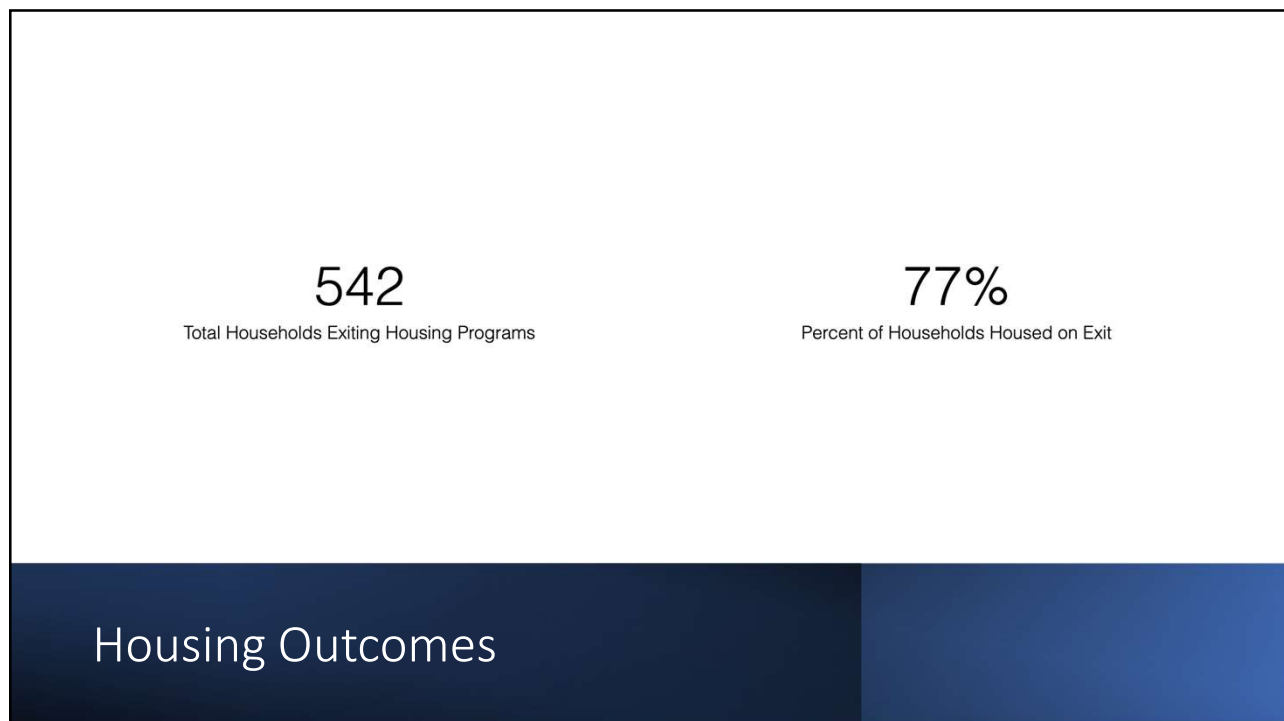


14

Housing Type		> PH – Permanent Supportive Housing (disability required for ...	PH – Rapid Re-Housing
Agency		^ Total Clients Housed	Total Clients Housed
1	ADEO	10	0
2	Almost Home NoCO	0	20
3	Catholic Charities	54	0
4	City of Greeley	61	41
5	Family Housing Network	0	58
6	Greeley Family House	0	53
7	Homeward Alliance	29	63
8	Housing Catalyst	189	0
9	North Range Behavioral Health	37	0
10	Rocky Mountain Human Services	0	17
11	Summit Stone Health Partners	28	0
12	The Matthews House	0	4
13	United Way of Weld County	0	1
14	Volunteers of America (Northern Colorado)	2	338
Totals		404	591

Housing Outcomes

15



Housing Outcomes

16

Total # of People Exiting from RRH or PSH to Housing	Total # of People Returned Before 6 Months	6 Month Housing Retention Rate	Total # of People Returned to before 1 year	1 Year Housing Retention Rate
322	24	93%	44	86%

Housing Retention Rates

17

Larimer County



• Strategic Plan to Address Homelessness across Larimer County

- Homeward Alliance, JG Research & Evaluation
- Close collaboration with City of Loveland, City of Fort Collins, Town of Estes Park, Larimer County and the Northern Colorado Continuum of Care
- Align efforts across jurisdictions, assess the current system, and strengthen our response system
- homewardalliance.org/current-projects-systems-strategy-and-support-services/

• Housing Partners of Larimer

- Landlord Engagement workgroup – service providers
- Landlord Education Series – Property Owners
- Landlord Incentives & Supports
- Direct partnership with Northern Colorado Continuum of Care Housing Placement System recipients
- larimer.gov/housing/hpl

How It Works



18

City of Greeley Programming



Outreach/
Access
Points

City of Greeley programming makes up different components of our Homeless Response System with other Community Service Providers

- Outreach Team serves as one access point to identifies individuals in the community and places them on the housing priority list
- Individuals are matched to housing resources through Coordinated Entry with the COC



Housing with
supportive
services

Coordinated Entry Team identifies individuals to be housed through program dollars the City is administering for:

- **Rapid Rehousing** - low to moderate needs individuals that need short term assistance until they can be self sufficient without support.
- **Permanent Supportive Housing**- Higher needs individuals that typically have a disability keeping them from maintaining employment

19

19

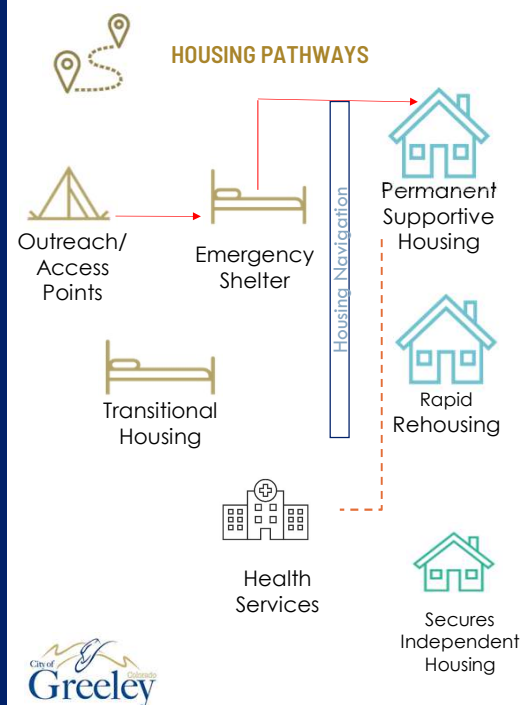
Meet Peter

- Widowed 68-year-old man
- Homeless for 8 years
- Traumatic Brain Injury from accident
- Extreme debt
- Severe depression and PTSD

With the help of the community outreach team and shelter:

- Referred to Foundations Team through Coordinated Entry COC team
- Eligible for Permanent Supportive Housing voucher
- Received ongoing support through Case Management
- Connected with mental health services at North Range

20



20

City of Fort Collins – Social Sustainability Department



The City of Fort Collins' primary homelessness response work is out of the Social Sustainability Department, whose mission is to support a diverse and equitable community that successfully meets the basic needs of all residents.

Three main roles within the homeless response system are:

Funding

Partnership

Alignment

21

21

Funding



\$1 million per year in funds granted out to nonprofit agencies

Directly allocate funds to the Continuum of Care, HMIS Data System, Murphy Center, and Outreach Fort Collins (largest funder of Outreach Fort Collins)

Additional funding allocated via competitive process

- Identified funding priorities: prevention, supportive services, sheltering

Goal is to fill gaps, particularly related to emergency response and life safety

- Seasonal Overflow Shelter
- Emergency Weather Shelter Plan
- Heat Response Plan

22

22

Partnership & Alignment



Partnership

- Member of multiple boards of directors (OFC, NoCO CoC, Opioid Abatement Council)
- Participant in collaborative problem-solving groups (Murphy Center Partner Council)
- Lead both a rapid response team and policy advisory team, including internal City staff and external partners
- Support partners in exploring and creating new programs like SafeLots
- Collaboration is key and no one entity can succeed in this work alone!

Alignment

- Many City departments engage with unhoused residents in some way, including Parks, Natural Areas, Police's HOPE Team, Transport and others
- Work to ensure alignment of policy and response, including camping enforcement
- Alignment between partner agencies and City departments/staff

23

23

How to support the Northern Colorado Continuum of Care

- Join a committee!
- Became an individual or organization member of the COC!
- Participate in Housing Partners of Larimer's Landlord Engagement program!
- Advocate for more resources to expand our homelessness response system!



contact@nocococ.org

24