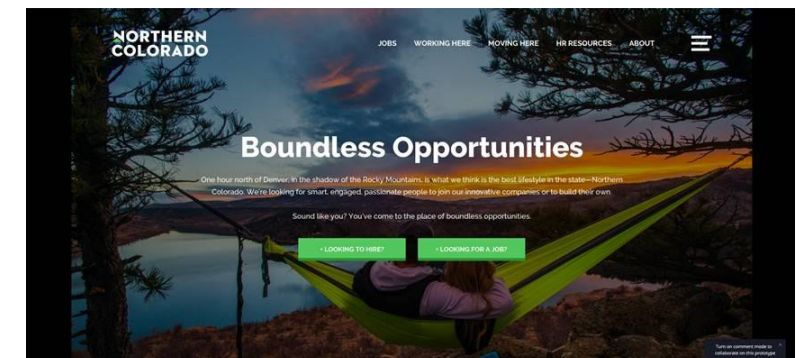


NORTHERN COLORADO: I-25, TALENT, GROWING JOBS

National Association of
Residential Property
Managers, Northern CO
January 15, 2020



THE CHAMBER

Local association of businesses and organizations that **care about the region's future**

Build our region's future through business.

Believe successful businesses make a strong local economy, which lets our community **afford a great quality of life.**

The Chamber serves as:

- A **convener** and **cultivator** of leaders and influencers who value business' role in vibrant communities and who make things happen,
- A **catalyst** for business growth through pragmatic public policy, strategic economic development, and support of existing businesses,
- And a **champion** for a balanced, resilient, thriving economy.



THE CHAMBER



One of the **largest** chambers in the state with 1,285 members

Only **5-Star Accredited** Chamber in Colorado

Locally founded and led

PARTNERING WITH AREA CHAMBERS

Northern
Colorado
Legislative
Alliance (NCLA)

Fix North I-25
Business Alliance

Regional Issues
Summit

Talent 2.0
Workforce
Development
Initiative

Annual Talent
Summit

Leadership
Northern
Colorado (LNC)

Business
Retention &
Expansion
(BR&E)

Regional
Business After
Hours

North Front
Range Electricity
Task Force



NORTHERN COLORADO PROSPERS



Driving The Future

Northern Colorado Prospers is a five-year strategic initiative of the Fort Collins Area Chamber of Commerce designed to address four specific challenges facing business in Northern Colorado.

Fix I-25

Continue our efforts to keep business moving by securing funding and support for the expansion of I-25 in Northern Colorado.

Align, Attract and Retain Talent

Ensure area employers have the talent they need and support the workforce education and training Northern Colorado needs – now and in the future.

Bold Voice of Business

Strengthen our ability to secure a positive business environment and amplify the voice of business in Northern Colorado.

Expand and Retain Existing Businesses

Meet with 100 area businesses each year to understand their challenges and ensure they can stay and grow in Northern Colorado.

FIX-125

COLORADO

DRIVE THE FUTURE

NORTH
FIX I-25

FIX NORTH I-25

Goal:

Secure money by 2025 to widen I-25 to three lanes between Fort Collins and Longmont

A - Free flowing traffic

B - Reasonably free-flow; ability to maneuver slightly restricted

C - Near free-flow speed; freedom to maneuver is restricted

D - Speed declines; freedom to maneuver more limited

E - Flow is volatile; virtually no usable gaps in traffic

F - Breakdown of flow

NORTH I-25 *LEVEL OF SERVICE*

A - Free flowing traffic

B - Reasonably free-flow; ability to maneuver slightly restricted

C - Near free-flow speed; freedom to maneuver is restricted

D - Speed declines; freedom to maneuver more limited

E - Flow is volatile; virtually no usable gaps in traffic

F - Breakdown of flow

**NORTH I-25 LEVEL
OF SERVICE**

WE ARE HERE



WHY ARE WE HERE?

- **NOT KEPT UP.** I-25 Longmont to Fort Collins lacks adequate capacity due to lack of state funding. Original concrete put down in 1968
- **POPULATION GROWTH.** Since I-25 built, population of two counties 4X. By 2040 +52% Larimer, +111% Weld
- **EXPENSIVE.** Additional lane Hwy 14 to Hwy 66 ~\$1.7B
- **NOT PRIORITY FOR STATE POLITICIANS.** Have had to fight to get any funding from General Fund
- **UNTIL 5 YEARS AGO NO ORGANIZED LOBBYING EFFORT**



Segment 8

Prospect Blvd - SH 14
Prospect Blvd Interchange
Prospect Blvd - Harmony Rd
Harmony Rd - SH 392

Segment 7

SH 392 - Crossroads Blvd
Crossroads Blvd Bridges
Crossroads Blvd - US 34
US 34 - SH 402

Segment 6

SH 402 - SH 60
SH 60 - SH 56

Segment 5

SH 56 Interchange
Sh 56 - Sh 66

Segment 4

OVERALL SCOPE OF PROJECT

Initial Improvements:

- two general-purpose lanes, one tolled express lane in each direction - CO 66 to CO 14 (27 miles)
- reconstructed interchanges and bridges
- Express Bus service
- new carpool and transit facilities

Improvements by Ultimate Build-Out:

- 3 general-purpose lanes, 1 tolled express lane each direction on the entire corridor
- additional carpool and transit facilities



COLORADO
Department of
Transportation

Corridor Vision

EXPRESS LANES | NORTH I-25
Johnstown to Fort Collins



TRANSIT STATION LOCATIONS

Commuter Rail

CR1	Fort Collins Downtown Transit Center - BNSF and Maple St.
CR2	CSU - BNSF between University Ave. and W. Pkoin St.
CR3	South Fort Collins Transit Center - US 287 and Harmony Rd.
CR4	North Loveland - BNSF and 29th St.
CR5	Downtown Loveland - BNSF and approximately 6th St.
CR6	Berthoud - BNSF and SH 56
CR7	North Longmont - BNSF and SH 66
CR8	Longmont - Sugar Mill, south of Rogers Rd.
CR9	Erie - I-25 and CR 8
	○ FasTracks Rail Stations to Downtown Denver

Express Bus

EB1	South Fort Collins Transit Center - US 287 and Harmony Rd.
EB2	Timberline - Harmony Rd. and Timberline
EB3	East Fort Collins - I-25 and Harmony Rd.
EB4	Windsor - I-25 and SH 392
EB5	Crossroads - Loveland between Crossroads Blvd. and US 34
EB6	West Greeley - US 34 and SH 257
EB7	Greeley - US 34 and 83rd Ave.
EB8	Greeley Downtown Transfer Center - 8th Ave. and 8th St.
EB9	Berthoud - I-25 and SH 56
EB10	Firestone - I-25 and SH 119
EB11	Frederick/Dacono - I-25 and SH 52
EB12	Erie - I-25 and CR 8
EB13	Broomfield - I-25 and SH 7
	○ DIA

Commuter Bus

CB1	Greeley - US 85 and D St.
CB2	South Greeley - 8th Ave. and 24th St.
CB3	Evans - US 85 and 42nd St.
CB4	Platteville - US 85 and Grand Ave.
CB5	Fort Lupton - US 85 and CR 14.5
	○ Brighton - US 85 and SH 7
	○ Commerce City - 72nd and Colorado



EXPRESS LANES

- Additional (3rd lane) is an Express Lane
- Open to anyone
 - Solo driver or driver with passenger pays a toll
 - Motorcyclists and drivers with at least two passengers travel free
 - So far – we have prevented free use of these lanes by electric vehicles
- Benefits
 - Maintain reliable travel times now and in the future
 - Reduce delays on most seriously congested corridors

RESULTS TO-DATE

- Climbing lane has been built on south-bound Berthoud hill
- Crossroads bridges and intersection rebuilt
- Work is underway to add a 3rd lane both directions Harmony Road in Fort Collins and Highway 402
- Prospect and 402 interchanges being rebuilt
- Work started in fall on the section of I-25 south of 402
- Our advocacy led to \$1B of additional general fund monies being spent in CO on transportation past 3 years

**\$937.5 million committed to
North I-25 over past 5 years**



FOR MORE INFORMATION ON NORTH I-25

www.codot.gov/projects/north-i-25

www.cityofloveland.org/departments/public-works/engineering/i25

TALENT ATTRACTION & DEVELOPMENT

**BOUNDLESS
OPPORTUNITY**

NORTHERN COLORADO

EMPLOYMENT STATS



Two-county workforce is
372,000 people



Average unemployment
2.54% for region vs. 4.4%
nationally (2017)



Annual job growth rate 2013-
2018 3.44% (2x national
average)

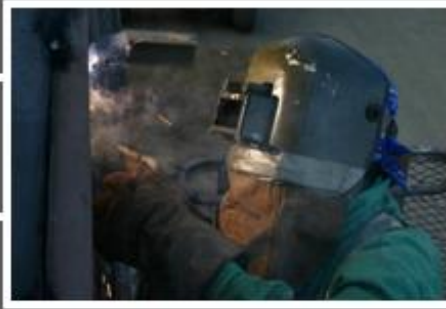


OVERVIEW

Talent 2.0 is **a workforce development partnership and strategy** for the Fort Collins-Loveland MSA (Larimer County) started in 2017

Talent 2.0 **partners:**

- Fort Collins Area Chamber of Commerce (convener)
- City of Fort Collins Economic Health Office
- Larimer County Economic and Workforce Development
- One NoCO Economic Development
- Loveland Chamber of Commerce
- City of Loveland Department of Economic Development
- United Way of Larimer County



TALENT 2.0 | WORKFORCE STRATEGY

FORT COLLINS – LOVELAND MSA

KEY FINDINGS

HIRING DIFFICULTY - From 2010 to 2015, the regional economy added almost 20,000 jobs but only 11,000 workers

CONTINUED TIGHTENING - 2017 – 2021 and beyond

- Employers will have at least 28,000 openings.
- Labor force adds only about 2,000 to 3,000 workers each year.

AGING WORKFORCE - In many key occupations, more than 25% of the workers are 55 or older.

TOP FACTORS IN WHEN CONSIDERING A NEW JOB OPPORTUNITY

SALARY

WORK-LIFE BALANCE

COMPANY BENEFITS

ADVANCEMENT OPPORTUNITIES

MEANINGFUL OR INNOVATIVE WORK

LOCATION OF NEW OPPORTUNITY

COMPANY CULTURE

7

1 = NOT IMPORTANT, 10 = VERY IMPORTANT

Boundless Opportunity

One hour north of Denver, in the shadow of the Rocky Mountains, is what we think is the best lifestyle in the state—Northern Colorado.

We're looking for smart, engaged, passionate people to join our innovative companies or to build their own.

Sound like you? You've come to the place of boundless opportunities.

+ **LOOKING FOR A JOB?**

+ **LOOKING TO HIRE?**

REGIONAL ECONOMIC PERSPECTIVE

Northern Colorado Shows Well



TOP-10 BEST-PERFORMING U.S. CITIES (PREVIOUS YEAR)

Provo-Orem, Utah (1)

San Jose-Sunnyvale-Santa Clara, California (11)

Austin-Round Rock, Texas (9)

San Francisco-Redwood City-South San Francisco, California (4)

Dallas-Plano-Irving, Texas (3)

Raleigh, North Carolina (2)

Orlando-Kissimmee-Sanford, Florida (7)

Seattle-Bellevue-Everett, Washington (17)

Fort Collins, Colorado (5)

Salt Lake City, Utah (10)

Large Cities 2018

Greeley, CO MSA

Overall Rank: 42 Population: 305,000

The 2018 Milken Institute Best-Performing Cities Index ranks U.S. metropolitan areas by how well they are creating and sustaining jobs and economic growth. The components include job, wage and salary, and technology growth. In most years, these give a good indication of the underlying structural performance of regional economics.

[View U.S. Map](#)[Download 2018 Report](#)[Compare Large Cities \(2018\)](#)[Rankings \(2018\)](#)

Metro's Performance in Each Index Component

Component	2013	2014	2015	2016	2017	2018	Score/ Value
5-yr Job Growth ¹	15	2	1	1	196	6	111.64
1-yr Job Growth ²	8	2	1	64	7	2	103.22
5-yr Wages & Salaries Growth ³	23	20	5	3	123	6	113.24
1-yr Wages & Salaries Growth ⁴	3	7	1	1	3	195	95.52
Short-Term Job Growth ⁵	57	3	4	91	5	2	103.25%
5-yr Relative HT GDP Growth ⁶	12	45	66	72	14	101	96.12
1-yr Relative HT GDP Growth ⁷	106	196	70	7	94	16	104.17
High-Tech GDP LQ ⁸	150	179	181	182	175	186	0.36
# of HT GDP LQs Over 1 ⁹	109	129	144	143	144	136	2.0

GROSS REGIONAL PRODUCT (GRP)



GRP also called 'regional GDP'

GRP is market value of all goods/services produced within a given area over a specific period of time

GRP is a good measure of the size, income, productivity of regional economy (Emsi)



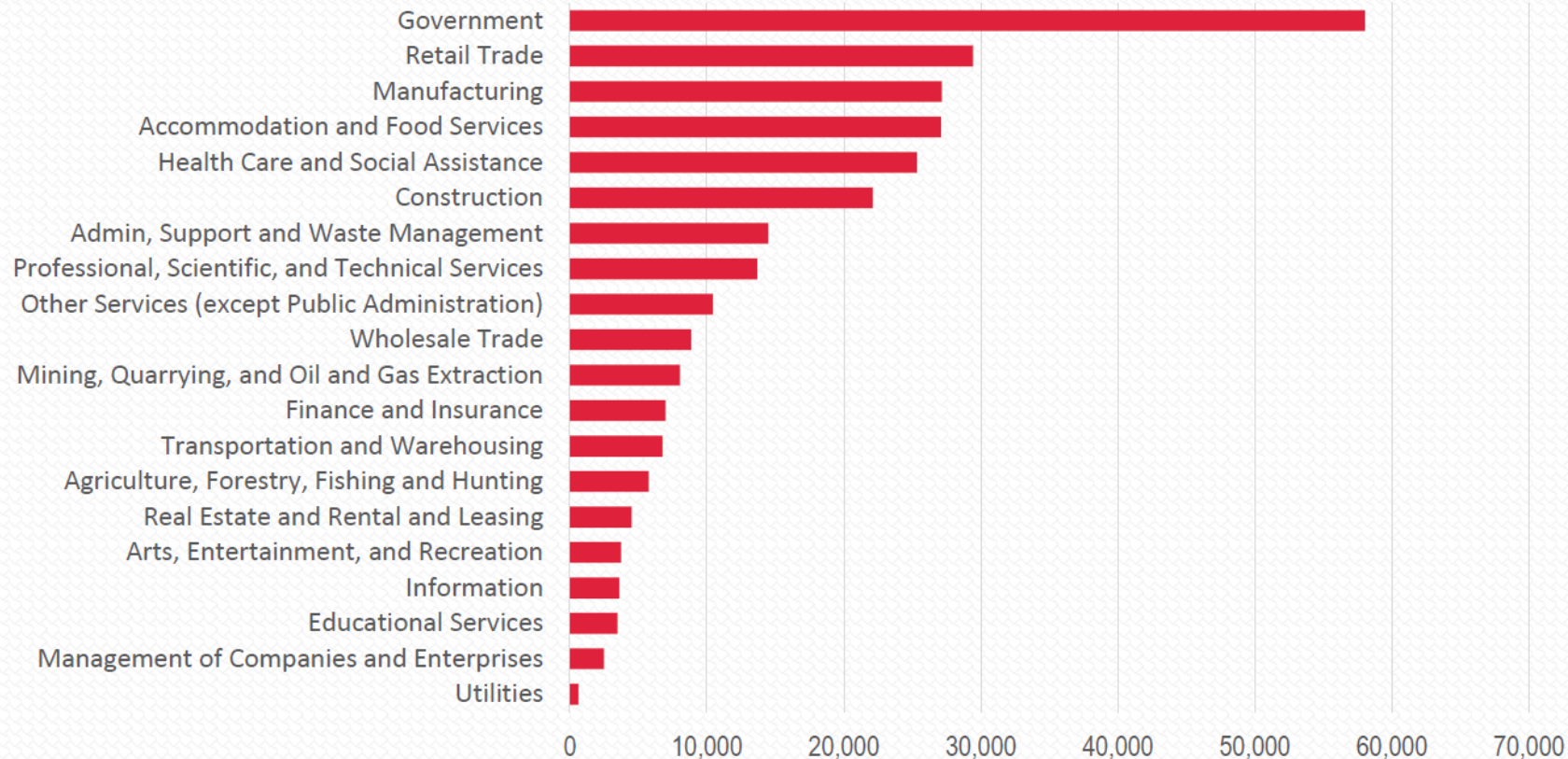
GRP of Northern Colorado grown by 6.2% annually since 2013



GRP of Northern Colorado is \$30.3 billion

REGIONAL ECONOMIC DEVELOPMENT

Industry Distribution (by Employment)



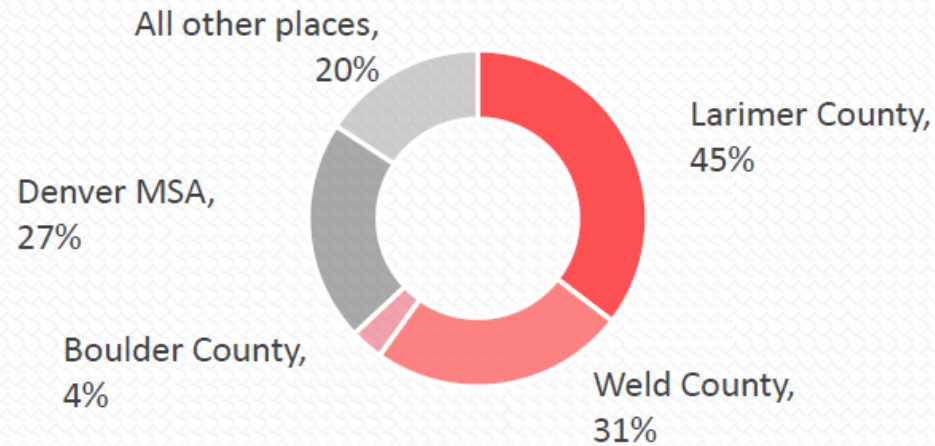
Industry defined by 2-digit NAICS code. Data from Emsi 2018.4. 2018 Employment estimates for Larimer and Weld, QCEW + Non-QCEW employees.

"Government" additionally includes local K-12 education as well public community colleges, universities and hospitals.

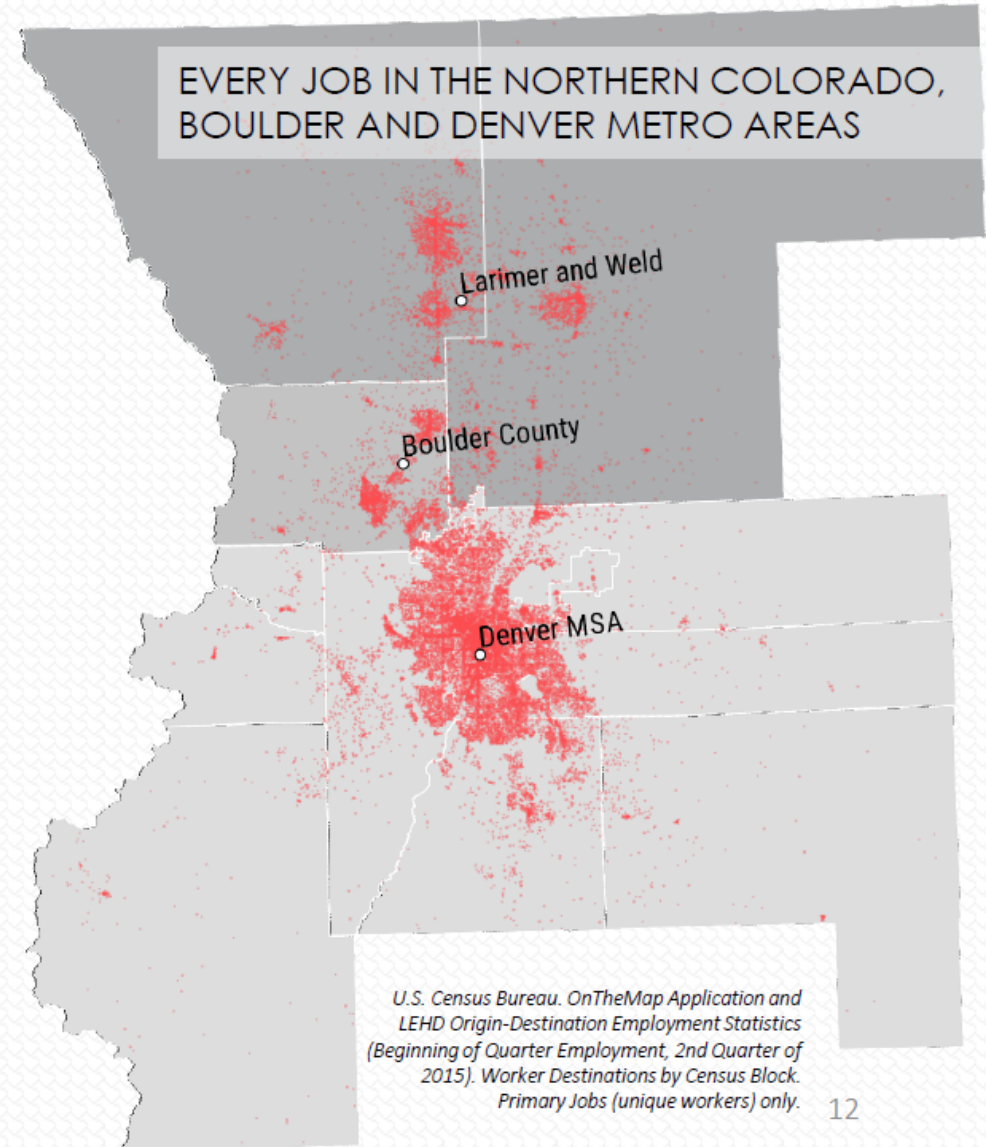
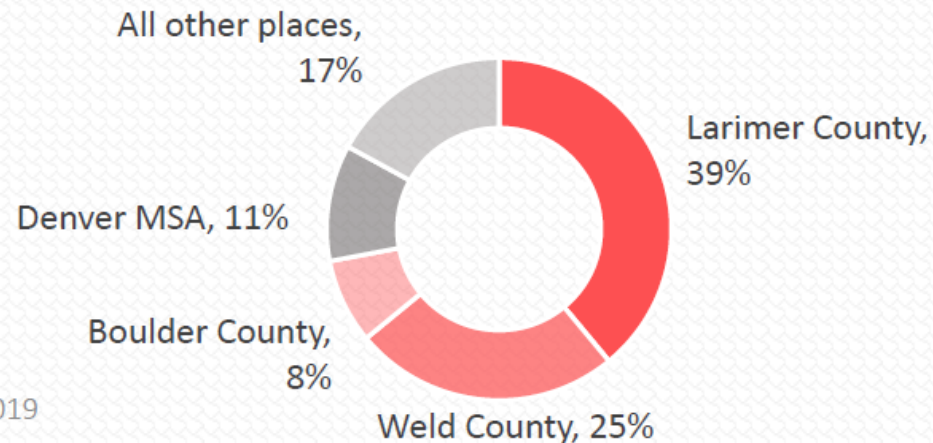
REGIONAL ECONOMIC DEVELOPMENT

Labor Distribution

WHERE DO WORKERS IN LARIMER AND WELD LIVE?

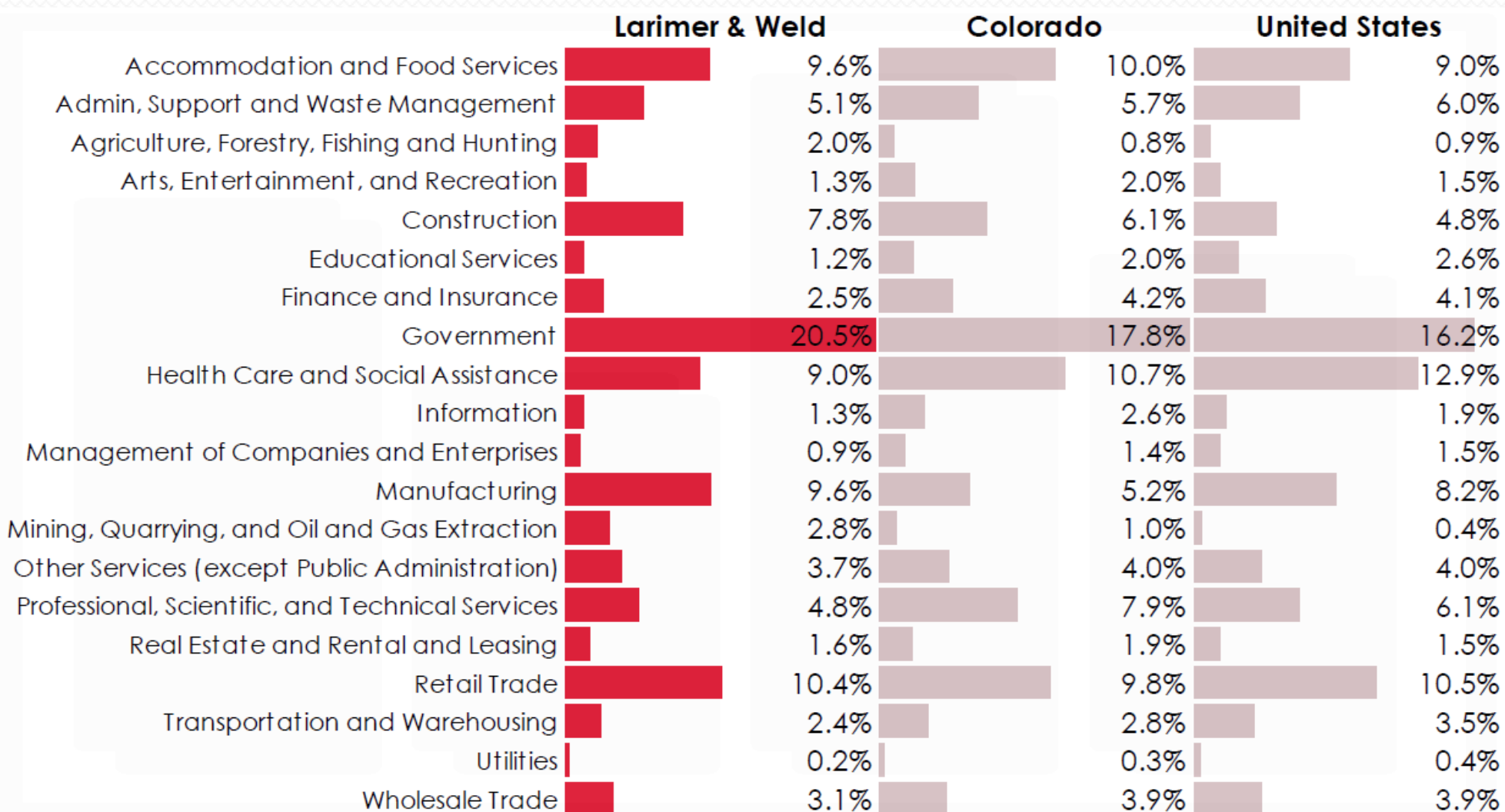


WHERE DO RESIDENTS OF LARIMER AND WELD WORK?



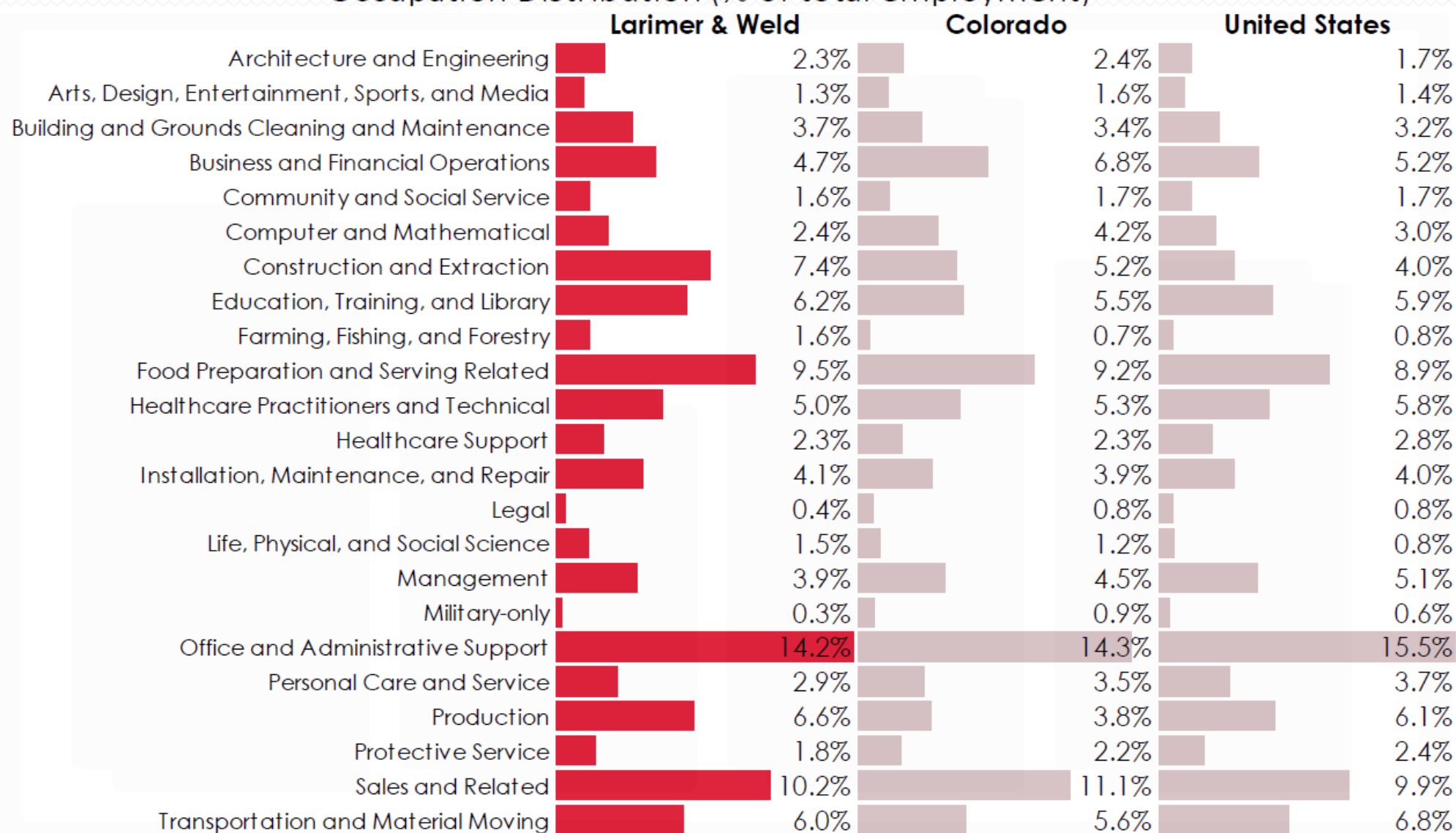
REGIONAL ECONOMIC DEVELOPMENT

Industry Distribution (% of total employment)



REGIONAL ECONOMIC DEVELOPMENT

Occupation Distribution (% of total employment)

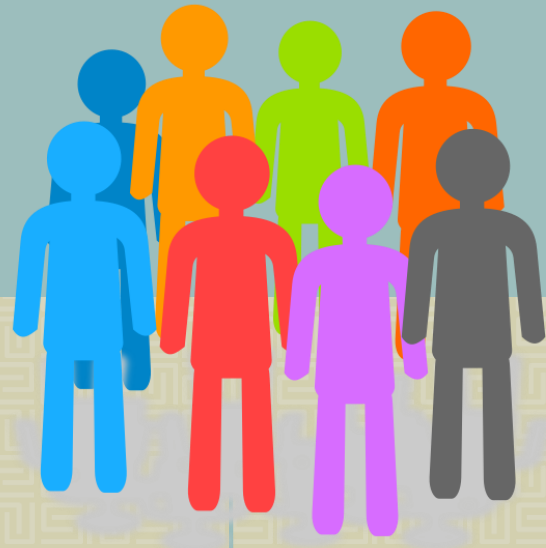




OIL AND GAS: HUGE PART OF AREA ECONOMY

- Two counties account for 91% of Colorado's oil production 2018
 - Weld (1 47.3 million barrels)
 - Larimer (3.7 million barrels)
 - SB19-181 very damaging
- Attack on oil & gas industry in Colorado is an attack on Northern Colorado economy

POPULATION



THEY'RE COMING



LARIMER-WELD POPULATION

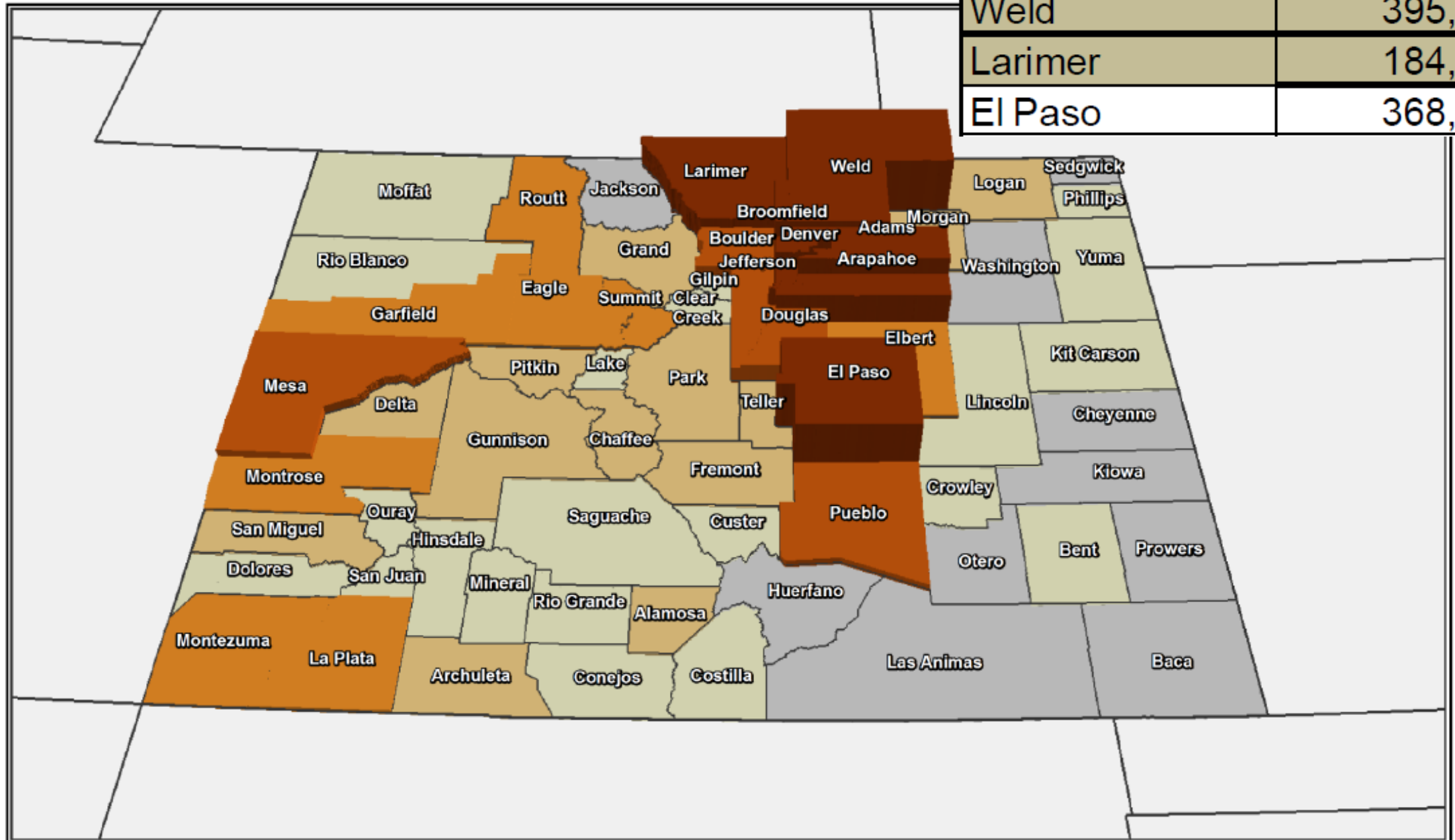
**650,000
today**

**1,000,000 by
2036**

	2010	2017	Total Ch.	Annual Ave. Growth Rate	Net Migration	Natural Increase
Larimer	300,532	343,853	43,321	1.94%	33,177	9,299
Weld	254,230	304,435	50,205	2.61%	34,482	16,587

**MIGRATION AND NATURAL INCREASE
BETWEEN 2010-17 (SOURCE: STATE DEMOGRAPHER)**

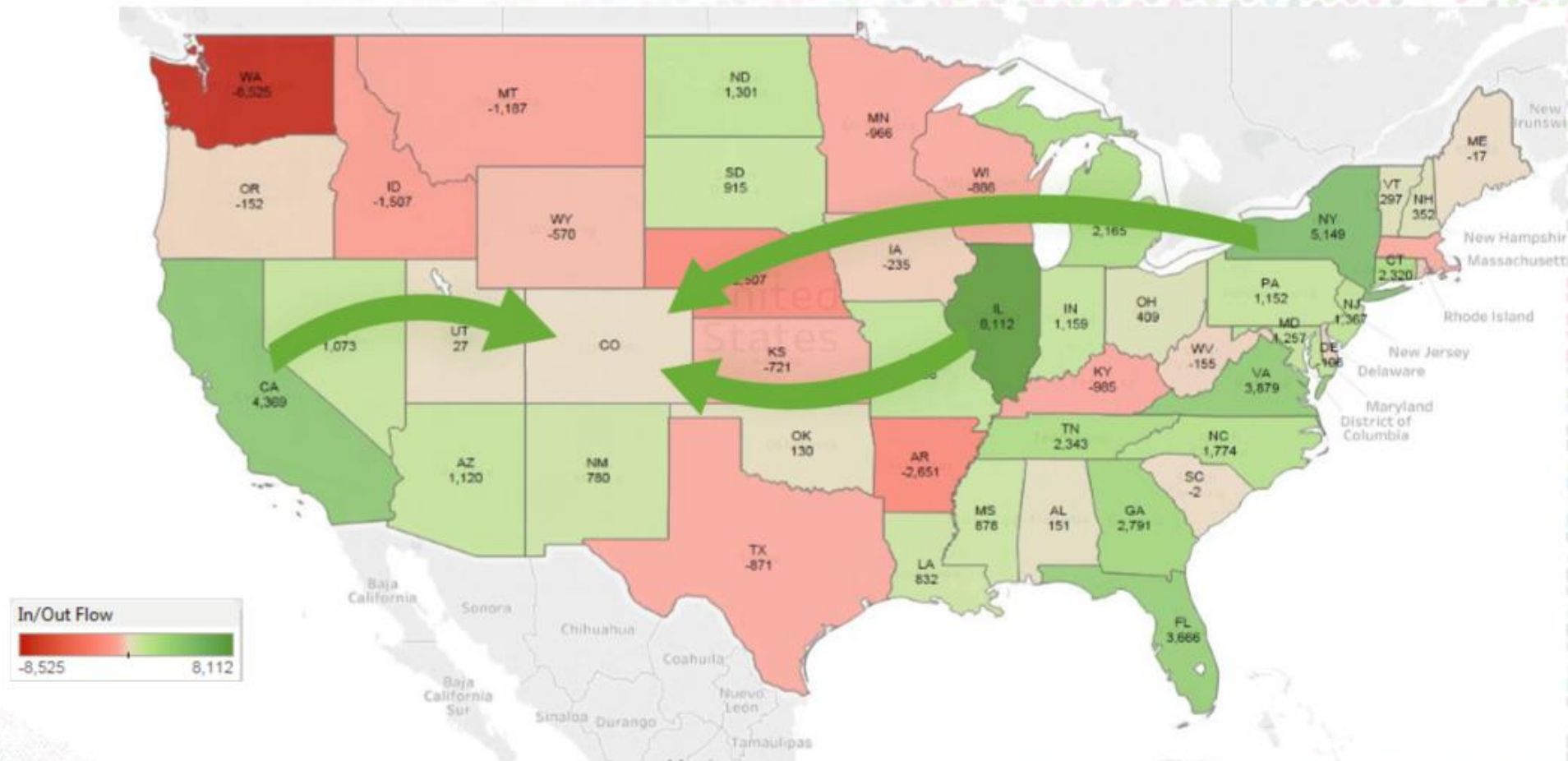
Denver	168,454
Weld	395,591
Larimer	184,618
El Paso	368,848



< 0

NET MIGRATION TO & FROM COLORADO

NUMBERS REPRESENT NET INFLOW/OUTFLOW IN 2016 (EX: 8,112 MIGRATED TO CO FROM IL ON NET)



Source: U.S. Census Bureau, 2018.

CBRE

MIGRATION FLOWS

Top 10 Migration Flows Larimer			
Moving From	IN	Moving To	OUT
Weld	3,498	Weld	3,943
Boulder	1,698	Boulder	1,560
Jefferson	1,547	Denver	1,492
Denver	1,523	Jefferson	706
El Paso	1,250	Maricopa, AZ	688
Adams	956	Arapahoe	630
Arapahoe	893	Adams	610
Douglas	881	Albany, WY	491
Mesa	408	Douglas	424
Laramie, WY	404	Laramie, WY	379
2012 - 16 American Community Survey			

Top 10 Migration Flows Weld			
Moving From	IN	Moving To	OUT
Larimer	3,943	Larimer	3,498
Adams	2,713	Boulder	2,701
Boulder	2,494	Adams	1,415
Jefferson	1,511	Denver	1,175
Arapahoe	1,153	Jefferson	799
Denver	1,105	Arapahoe	656
El Paso	804	Logan	530
Maricopa, AZ	490	El Paso	482
Douglas	458	Morgan	239
Berkeley, SC	313	Broomfield	182
2012 - 16 American Community Survey			

<https://flowsmapper.geo.census.gov/>



COLORADO
Department of Local Affairs

COST OF LIVING

COST OF LIVING	Fort Collins	Greeley	Colorado	USA
<u>Overall</u>	118	106	121	100
<u>Grocery</u>	101	98	101	100
<u>Health</u>	96	99	96	100
<u>Housing</u>	169	128	166	100
<u>Median Home</u>	\$389,700	\$294,700	\$384,000	\$231,200
<u>Utilities</u>	91	99	98	100
<u>Transportation</u>	84	88	107	100
<u>Miscellaneous</u>	104	101	100	100

https://www.bestplaces.net/cost_of_living/

WHAT ARE PEOPLE IN FC DOING IN 15 YEARS TO EARN LIVING?

A few thoughts:

- We are a **workbench for Silicon Valley** and will remain so
- Boom of **health care** sector
- Timnath, Windsor, Severance, Wellington as “**cheaper**” bedroom communities to Fort Collins
- Increase in **passive income** - retirements
- **Higher education's future model** will be interesting to follow – disruptive technologies

OPPORTUNITIES / RISKS

What are our opportunities?

- Shape region like none other in country — strong quality of life and economic prosperity
- Continue as workbench of Silicon Valley and acquire some tech jobs as California continues to escalate its costs and dysfunction
- Retirement income — local people retiring in place, in-migration
- Health care — first rate care, employment

OPPORTUNITIES / RISKS

- ▶ What are some of our risks / vulnerabilities?
 - ▶ Complacency and arrogance – thinking we have arrived
 - ▶ Attacks on oil / gas and ag
 - ▶ Unforeseen changes in consumer markets impact local companies
 - ▶ Federal deficit – can't continue building huge deficits; what would fewer dollars mean for federal offices here and federal research?
 - ▶ Higher education model and disruptive technologies an unknown
 - ▶ Lack of qualified workforce
 - ▶ Housing affordability
 - ▶ Highway access across region but especially I-25
 - ▶ Local government over-regulation discouraging business attraction / expansion



Thank you!

BONUS SLIDES



COLORADO
Department of
Transportation

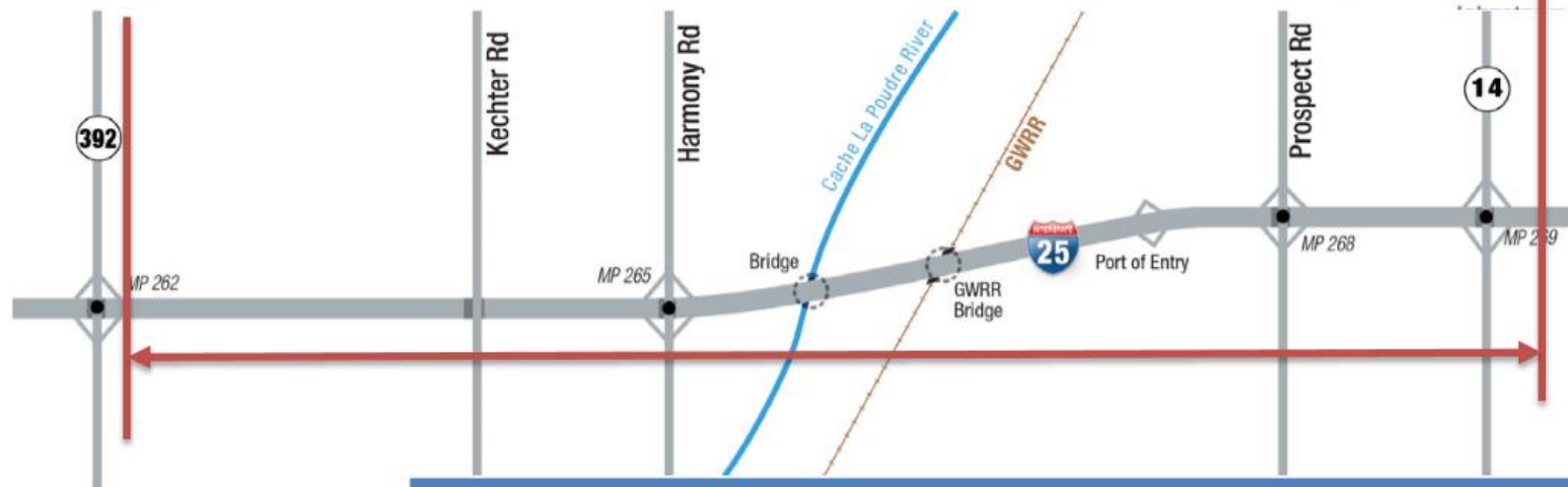
Segment 8 – CO 392 to CO 14 (7 miles)



I-25 & Harmony



I-25 & CO 392



2 GP + 1 EL

Add Express Lane (to EIS alignment)

\$218M

- Kechter Bridge Replacement
- Replace GWRR
- Reconstruct Port of Entry

Mulberry Interchange (see next slide)

\$52M

3 GP + 1 EL

Add General Purpose Lane

\$145M

Complete EIS

TOTAL FUNDING NEED

\$415M

Prospect

Conceptual Rendering

Summer 2019 – Fall 2020

- New 8 lane bridge
 - 2 Eastbound thru lanes
 - 2 Westbound thru lanes
 - 2 Eastbound to Northbound I-25 turn lanes
 - 2 Westbound to Southbound I-25 turn lanes
- Two phased bridge construction to minimize closures of prospect
- Bike lanes and sidewalks both Eastbound and Westbound



* Trees by others



COLORADO
Department of
Transportation

Segment 7 – CO 402 to CO 392 (8 miles)

EXPRESS LINES NORTH
I-25
Johnstown to Fort Collins



I-25 & CO 402



I-25 & Crossroads Blvd.



2 GP + 1 EL

Express Lane CO 402 to CO 14 (to EIS alignment)	\$138M
<ul style="list-style-type: none">• Widen Big Thompson• Replace LCR 20• Replace GWRR	
US34/I25 Interim Bridge (see next 2 slides)	\$42M

3 GP + 1 EL

Add General Purpose Lane	\$80M
I-25 & US 34 & Centerra Parkway Interchange	\$136M

Complete EIS

TOTAL FUNDING NEED	\$396M
---------------------------	---------------



COLORADO
Department of
Transportation

Segment 6 – CO 56 to CO 402 (5 miles)

EXPRESS LINES NORTH
I-25
Johnstown to Fort Collins



I-25 & CO 60

2 GP + 1 EL

Add Express Lane

- Interchange at SH60/LCR48
- Interchange at SH16
- Replace Bridges LCR46, GWRR, LCR14
- Park n Ride at SH60

\$236M

3 GP + 1 EL

Add General Purpose Lane

\$16.3M

Complete EIS

TOTAL FUNDING NEED

\$252.3M



COLORADO
Department of
Transportation

Segment 5 – CO 66 to CO 56 (7 miles)

EXPRESS LANES | NORTH I-25
Johnstown to Fort Collins



2 GP + 1 EL

Add Express Lane

- Interchange at WCR34
- Interchange at SH56
- Replace Bridges WCR32, GWRR, Valley Road, Little Thompson
- Express Bus Transit at SH56

\$395M

3 GP + 1 EL

Add General Purpose Lane

\$30M

Complete EIS

TOTAL FUNDING NEED

\$425M



I-25 & CO 66 - Done



I-25 & CR 38

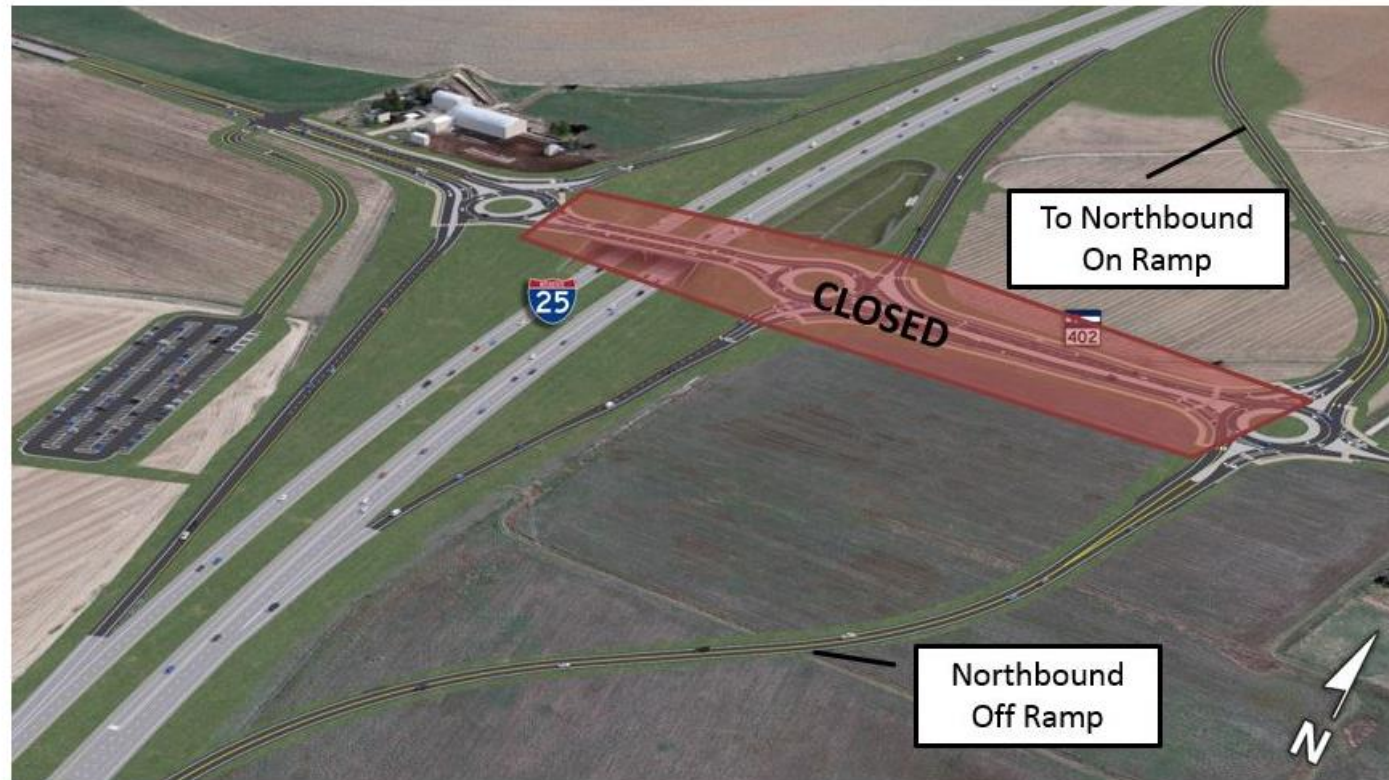
I-25 North Express Lanes: Berthoud to Fort Collins

I-25-Co 402 Interchange Closure

By the end of 2019, the I-25/CO 402 interchange will undergo substantial changes, resulting in a new-and-improved interchange. To support reconstruction, crews have closed both directions of CO 402 under I-25.

The closure extends from the southbound I-25 on- and off-ramps to the new Southeast Frontage Road. Once completed in October, the new configuration at CO 402 will be fully operational, and future impacts at this interchange will be minimal.

Stay updated on all project information by [joining our mailing list](#) or [contacting us](#), or by calling the project hotline, [720-593-1996](tel:720-593-1996).



[See detour details.](#)

Project Highlights

1. Improve I-25 Mainline:

- Two general-purpose lanes and one tolled express lane in each direction
- Accommodations for three general-purpose lanes and one tolled Express Lane in each direction in the future for the ultimate condition
- Modern design to meet current standards
- 20 new bridges
- Incorporation of Intelligent Transportation Systems (ITS)
- Rural template with 32-foot center median
- Priority section is approximately ½ mile south of the CO 56 interchange north up to the CO 402 interchange

2. Improve Colorado Highway 60 Interchange

3. Improve Larimer County Road (LCR) 16 Interchange

4. Improve CO 56 Interchange

- Straighten mainline I-25
- Address substandard acceleration lanes
- Construct Park-n-Ride location for an express rapid bus platform for Bustang
- Improve Weld County Road (WCR 34) interchange

5. Improve Frontage Roads:

- Relocate frontage road intersections at WCR 32, WCR 34, WCR 38, CO 56/WCR 44, CO 60, and LCR 16

